

Deutsche Messe Worldwide  
 FIERA MILANO  
**TPA ITALIA**  
 www.tpa-italia.com  
**6-9 MAGGIO 2014**  
 Fiera Milano Rho

# L'AMMONITORE

INTERNATIONAL

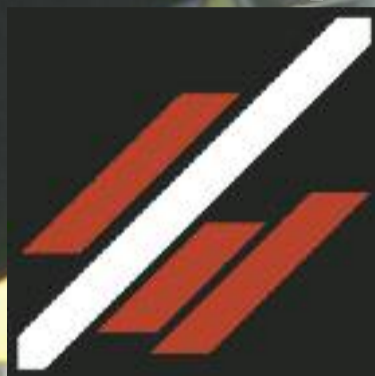
Biennale Internazionale per i Sistemi di Azionamento, Fluidotecnica e Automazione  
 TPA ITALIA  
**LA NUOVA PIATTAFORMA B2B PER L'INNOVAZIONE TECNOLOGICA APPLICATA.**

## The world of Sheet Metal Processing

The 11<sup>th</sup> Blechexpo and the 4<sup>th</sup> Schweisstec will take place at the Stuttgart Exhibition Centre from the 5<sup>th</sup> through the 8<sup>th</sup> of November, 2013. This is still over a year from now, but the complementary trade fair duo is already drawing attention to itself in several ways. On the one hand, nearly 50% of the exhibitors who participated at the previous 10<sup>th</sup> Blechexpo have already registered. On the other hand, alone those manufacturers and distributors from countries all over the world who have already made bookings will occupy roughly 430,000 square feet of overall floor space, i.e. more than 45% of all space available in halls 1, 3, 4, 5, 6, 7, 8 and 9 at the Stuttgart Exhibition Centre.

With the exception of hall 2 and the gallery in hall 1, a total of 1,000,000 square feet of overall floor space will be accessible to the 11<sup>th</sup> Blechexpo and the 4<sup>th</sup> Schweisstec, and is already completely reserved for 1000 exhibition booths which have either already been firm booked, or for which quotations have been issued in response to RFQs. And thus above all the Blechexpo international trade fair for sheet metal processing is headed for record breaking results of an entirely unexpected magnitude. At the same time, the Schweisstec international trade fair for joining tech-

### Blechexpo



11<sup>th</sup> International trade fair for sheet metal working

### Schweisstec



4<sup>th</sup> International trade fair for joining technology

nology, which showcases related process technology, is experiencing highly promising development and is making its contribution to the presentation of the entire process sequence in the areas of sheet metal and profile processing with currently more than a third of the exhibitors from Schweisstec 2011, as well as requirements for more than 43,000 square feet of overall floor space.

Including bookings which can definitely be expected to materialise in the upcoming weeks (after the summer break) due to previously issued quotations, registration numbers for the fall of 2012 – a full year before Europe's industry event of the year in 2013 – will exceed the 60% mark based on the record breaking numbers achieved at the 10<sup>th</sup> Blechexpo and the 3<sup>rd</sup> Schweisstec. Trade fair promoters P. E. Schall GmbH & Co. KG are very pleased with the large numbers of booking received from returning exhibitors from the years 2007, 2009 and 2011, who more or less hit the bull's eye with their trade fair participation and obviously want to profit from Blechexpo's significant and still growing importance within the industry sector.

This importance was expressed unmistakably no later than at the 10<sup>th</sup> Blechexpo and the 3<sup>rd</sup> Schweisstec held in 2011, at which time a considerable increase in expert visitor numbers (+15%) from inside and above all from outside of Germany became apparent, despite full utilisation. With 27,000 expert visitors from 89 countries at the last event, Blechexpo and Schweisstec have mutually reached a level of internationalism in just a few years, which impressively reflects global manufacturing business in the field of purchased parts and assemblies made of sheet metal and profiles.

As a logical consequence, more and more foreign manufacturers and distributors are viewing Blechexpo as an essential industry platform, which was already made apparent at the last Blechexpo and Schweisstec when they hosted exhibitors from 31 countries around the world.

Based on today's registration and booking status, it can be assumed that the record breaking results obtained in 2011 will certainly be reached again, if not exceeded, bumping Blechexpo and Schweisstec up into a new dimension.

**GERARDI** **WORKHOLDING & ANGLE HEADS**  
 gerardi.it  
 World wide advanced for over 40 years!  
**GERARDI THE ORIGINAL** Since 1971



# Italian exhibitors list

**Adige S.p.A.**  
Blm Group  
38056 Levico Terme (TN)  
hall 1 - stand 1704

**Adige Sys S.p.A.**  
38056 Levico Terme (TN)  
hall 1 - stand 1703

**Aida S.r.l.**  
25020 Pavone  
hall 8 - stand 8320

**Andolina S.r.l.**  
96012 Avola  
hall 4 - stand 4115

**Apollo S.r.l.**  
42014 Roteglia di Castellarano (RE)  
hall 1 - stand 1412

**Asservimentipresse S.r.l.**  
26815 Massalengo  
hall 8 - stand 8309

**Balconi Pressecentriche S.p.A.**  
20814 Varedo (Milano)  
hall 8 - stand 8414

**Benacchio S.r.l.**  
36050 Cartigliano  
hall 8 - stand 8115

**Bonaiti Giuseppe & F.lli S.p.A.**  
23801 Calolziocorte (LC)  
hall 5 - stand 5105

**Bordignon Trading S.r.l.**  
36060 Romano d'Ezzelino (VI)  
hall 4 - stand 4409

**Brusa & Garboli S.r.l.**  
28924 Verbania  
hall 1 - stand 1119

**Camu S.r.l.**  
36050 Bressanvido (VI)  
hall 8 - stand 8100

**Carlo Cerini Off.Mecc. S.r.l.**  
20027 Rescaldina  
hall 8 - stand 8002-1

**Cisam Impianti S.r.l.**  
20900 Monza (MB)  
hall 8 - stand 8102

**Codatto International S.p.A.**  
36045 Lonigo (VI)  
hall 1 - stand 1701-1

**Comalferlatta S.p.A.**  
24055 Cologno al Serio  
hall 5 - stand 5119-1

**Costa Levigatrici S.p.A.**  
36015 Schio (VI)  
hall 3 - stand 3102

**Csp Group S.r.l.**  
36024 Nanto  
hall 8 - stand 8113

**Cy-laser S.r.l.**  
36015 Schio (VI)  
hall 1 - stand 1701

**D.F. Edizioni srl - Mtm Magazines**  
20010 Cornaredo (MI)  
hall 3 - stand 3600-1

**Dalcos S.p.A.**  
31033 Castelfranco Veneto (TV)  
hall 3 - stand 3406

**Dallan S.p.A.**  
31033 Castelfranco Veneto (TV)  
hall 3 - stand 3406

**Damilano Group S.r.l.**  
12100 Madonna dell'Olmo (CN)  
hall 5 - stand 5400-1

**Di.Gi.Emme S.r.l.**  
22060 Carugo (CO)  
hall 8 - stand 8112

**Dietronic S.r.l.**  
26866 S. Angelo Lodigiano  
hall 8 - stand 8104

**Ernesto Malvestiti S.p.A.**  
20092 Cinisello B. (MI)  
hall 8 - stand 8501

**Erredue S.p.A.**  
57121 Livorno  
hall 1 - stand 1107-1

**Euromac S.p.A.**  
41043 Formigine (MO)  
hall 7 - stand 7515

**Euromac S.p.A.**  
41043 Formigine (MO)  
hall 3 - stand 3414

**Euromeccanica Group S.p.A.**  
36027 Rosà (VI)  
hall 8 - stand 8210

**Europass S.r.l.**  
31033 Castelfranco Veneto (TV)  
hall 4 - stand 4406

**Ferrato Davide S.a.s.**  
35030 Rubano (PD)  
hall 5 - stand 5507

**Fixi S.r.l.**  
10146 Torino  
hall 7 - stand 7116

**Franchini Lamiere S.p.A.**  
25010 San Zeno Naviglio (BS)  
hall 5 - stand 5118

**Galdabini S.p.A.**  
21010 Cardano Al Campo (VA)  
hall 8 - stand 8405

**Gasparini Industries s.r.l.**  
31036 Istrana (TV)  
hall 7 - stand 7515

**Gasparini S.p.A.**  
30035 Mirano (VE)  
hall 3 - stand 3001

**Gecam S.r.l.**  
43100 Parma  
hall 1 - stand 1705

**Giasini SpA**  
24050 Grassobbio (BG)  
hall 4 - stand 4305

**Gigant Italia S.r.l.**  
40012 Calderara di Reno (BO)  
hall 8 - stand 8505

**Givi Misure s.r.l.**  
20834 Nova Milanese (MB)  
hall 3 - stand 3000

**Gmp Minuterie Metalliche srl**  
35030 Selvazzano (PD)  
hall 8 - stand 8005-1

**Guidolin Stampi**  
36050 Cartigliano (VI)  
hall 8 - stand 8514

**Ilnor S.p.A.**  
30037 Gardigiano di Scorzé  
hall 6 - stand 6225

**Ima Industria Meccanica S.p.A.**  
22060 Arosio (CO)  
hall 8 - stand 8501

**Imcar S.p.A.**  
20863 Concorezzo (MB)  
hall 5 - stand 5122

**Intercom S.r.l.**  
20064 Gorgonzola (MI)  
hall 4 - stand 4303

**Intermac - Biesse Group S.p.A.**  
61122 Pesaro  
hall 1 - stand 1709

**Invernizzi Presse**  
23855 Pescate (LC)  
hall 8 - stand 8504

**Iron**  
31010 Mareno Di Piave (TV)  
hall 3 - stand 3410

**Junior snc di Cescon L. & C.**  
31010 Mareno Di Piave (TV)  
hall 8 - stand 8404



**Lafranconi Technologies S.r.l.**  
23826 Mandello del Lario (LC)  
hall 6 - stand 6201

**Lames S.r.l.**  
35010 Pieve Di Curtarolo PD  
hall 8 - stand 8411

**Locatelli Meccanica S.r.l.**  
52010 Subbiano (Arezzo)  
hall 8 - stand 8413

**Ma.Te Presse S.r.l.**  
24033 Calusco d'Adda (BG)  
hall 8 - stand 8120

**Mandelli Normalizzati s.r.l.**  
10070 Robassomero (TO)  
hall 4 - stand 4519

**Mar.Te Edizioni s.r.l.**  
21100 Varese  
hall 6 - stand 6120

**Marcegaglia**  
46040 Gazoldo degli Ippoliti  
hall 5 - stand 5411

**MAS Meccanica s.n.c.**  
30020 Torre di Mosto (VE)  
hall 8 - stand 8116

**Meccaniche Lisciotto s.r.l.**  
36028 Rossano Veneto (VI)  
hall 3 - stand 3008

**Meclostampi s.r.l.**  
22074 Lomazzo (CO)  
hall 4 - stand 4108

**Meroni F.lli s.r.l.**  
23843 Dolzago (LC)  
hall 6 - stand 6226-1

**Metalinox S.r.l.**  
33050 Fiumicello (UD)  
hall 5 - stand 5110

**Millutensil S.r.l.**  
20124 Milano  
hall 8 - stand 8319

**Mollificio Cappeller S.p.A.**  
36050 Cartigliano (VI)  
hall 4 - stand 4309

**Mossini S.p.A.**  
23855 Pescate (LC)  
hall 8 - stand 8310

**Newstark**  
35017 Piombino Dese  
hall 4 - stand 4412

**Nitty-Gritty S.r.l.**  
41057 Spilamberto  
hall 3 - stand 3216

**Nuova Ret s.r.l.**  
20092 Cinisello Balsamo  
hall 4 - stand 4416

**Ocsa Officine di Crocetta SpA**  
31035 Crocetta Del Montello  
hall 5 - stand 5402

**Officine Rasera s.r.l.**  
31035 Crocetta Del Montello  
hall 6 - stand 6414-1

**Omab s.r.l.**  
20098 San giuliano Milanese  
hall 6 - stand 6303

**Omcca s.n.c.**  
20038 Seregno (MI)  
hall 3 - stand 3216

**Ompsa s.r.l.**  
52010 Subbiano (AR)  
hall 8 - stand 8415

**Oti srl**  
20832 Desio (MB)  
hall 8 - stand 8112

**Pola e Massa s.r.l.**  
15076 Ovada (AL)  
hall 1 - stand 1128

**Produtech s.r.l.**  
24060 San Paolo D'Argon  
hall 1 - stand 1800-3

**Promau s.r.l. / Davi - Promau**  
47522 Cesena (FC)  
hall 3 - stand 3308

**PubliTec s.r.l. - Deformazione**  
20139 Milano  
hall 6 - stand 6103

**Rgs Schiavetti srl**  
15060 Stazzano  
hall 5 - stand 5502

**Rolleri S.p.A.**  
29020 Vigolzone (PC)  
hall 1 - stand 1113

**S.I. Engineering S.r.l.**  
12062 Cherasco - Fraz. Roreto  
hall 1 - stand 1401

**S.T.A.F. S.p.A.**  
60044 Fabriano  
hall 3 - stand 3009

**Sala Punzoni S.r.l.**  
23801 Calolziocorte  
hall 4 - stand 4526

**Salvagnini Italia S.p.A.**  
36040 Sarego (VI)  
hall 1 - stand 1615

**Sangiaco Pressen**  
31029 Vittoro Veneto  
hall 3 - stand 3414

**Saronni S.p.A.**  
28040 Borgo Ticino (NO)  
hall 8 - stand 8318

**Schiavetti Lamiere Forate s.r.l.**  
15060 Stazzano  
hall 5 - stand 5502

**Sia-Mpl s.r.l.**  
42041 Brescello  
hall 5 - stand 5502

**Sideros Engineering s.r.l.**  
29027 Podenzano (PC)  
hall 1 - stand 1800-2

**Sika s.r.l.**  
31090 Dosson di Casier (TV)  
hall 5 - stand 5404

**Special Springs srl**  
36060 Romano d'Ezzelino  
hall 4 - stand 4309

**Starmatik s.r.l.**  
31040 Nervesa Della Battaglia (TV)  
hall 1 - stand 1708

**Subforama Europass s.r.l.**  
31033 Castelfranco Veneto (TV)  
hall 1 - stand 1413

**Tecniche Nuove S.p.A. Gruppo Editoriale**  
20157 Milano  
hall 4 - stand 4400-1

**Trafime S.p.A.**  
95045 Misterbianco  
hall 5 - stand 5310

**TTEngineering S.r.l.**  
22074 Lomazzo (CO)  
hall 1 - stand 1408

**Vema s.r.l.**  
30029 Stino di Livenza (VE)  
hall 8 - stand 8509

**Walmaz Stampi s.r.l.**  
35010 San Giorgio delle Pertiche (PD)  
hall 8 - stand 8113-1

**Waterjet Corporation s.r.l.**  
20052 Monza (MB)  
hall 3 - stand 3509

**Zani S.p.A.**  
22078 Turate (CO)  
hall 8 - stand 8114





**MICTU**   
special tools WC/PCD



## Products



### Special feeding plants for servopresses

The market of the sheet metal working and feeding plants for presses is looking always more and more towards flexible solutions; people are looking for feeding plants that can work different type of material with different widths and thicknesses. For this reasons is increasing also the demand for electrical presses, commonly named servo presses, that can work aluminium as well as carbon steel with an high tensile strength. In this background also feeding lines for presses have to be redesigned and realised following these new market exigencies. Normally compact feeding plant are used to work high thicknesses, instead thin material are generally worked by traditional plants with loops that can reach 12 meters length. The difficulty in providing



Feeding lines for presses

a feeding plant for a servopress is finding the optimization of the plant dimensions, so that it can be able to work with different types of materials with different characteristics.

Asservimentipresse settled in Massalengo (LO), is specialized in press automation (the company realises decoilers, straighteners, feeders, straightener-feeder-units) and feeding lines for presses and is now producing also this kind of feeding plant for servopresses. The company has already delivered a plant for servopress in Germany to a company that works for Audi and Volkswagen and now is under construction another plant that will work together with a German electrical press of 2500 Ton that will be delivered in North Europe.

**Hall 8 - Stand 8309**

Further information on: Asservimentipresse  
Phone 0039 0371 48 20

### Italian pneumatic components

With more than 30 years experience in pneumatic field, Aignep is an Italian leading manufacturer of pneumatic components. Aignep is a dynamic player in this field thanks to the perseverance, industriousness and significant investments of Bugatti family.

Nowadays Aignep consists in a serious industrial reality which counts 150 workers on a production site of 22.000 sqm located near Brescia.

Aignep automatic stock contains about 13.000 items and a total amount of 10 million pieces permitting delivery time to all customers within 3 days from order date.

All Aignep products are manufactured here in our company and raw material and internal components have Italian certified origin. Moreover Aignep



Pneumatics components and fittings range

has only modern machinery including automated robotic assembly lines for granting the best product quality to our customers.

Aignep exports the 70% of its production and it is present in more than 80 countries through a very wide network of reliable distributors. We have our own branch offices in USA, Spain, Switzerland and Brazil.

Aignep has a very complete pneumatic range that includes fittings, cylinders, FRL units, valves and the Infinity line for compressed-air distribution into facilities. As we has born as fittings manufacturers, Aignep fittings range is one of the widest worldwide.

We manufacture push-in fittings for compressed air made of brass, plastic and stainless steel suitable for any industrial

application, push-in fittings for high pressure for oil and lubrication systems, push-on safety fittings, compression and universal fittings for metal tubes, brass adapters and ball valves for different fluids, a very wide range of quick couplings, including universal and the safety versions.

Aignep range of pneumatic cylinders includes cylinders according to normative and special cylinders from diameter 6 up to diameter 320. Most important types are the ISO 15552, the ISO 6432 and the ISO 21287.

FRL units range consists of 4 sizes, from 1/8 up to 1" and includes regulators (also for water), filters, lubricators, shut off valves and soft start valves.

Solenoid valves, pneumatic valves, manual valves, micro valves, panel valves, pedal valves, 18 mm valves, namur valves and many other types of valves complete our pneumatic range.

Beside the standard pneumatic products, Aignep is manufacturing since almost 10 years the Infinity range: aluminum tubes and metal fittings for compressed-air distribution into facilities.

Further information on: Aignep - Phone +39 0365 896626

### Tailor-made fixtures

It is not always possible to simply clamp a workpiece into a vise or onto a pallet. Unusual workpiece shapes, special types of machining and specific materials call for individual fixturing solutions. At the beginning of a manufacturing process chain, there is a well-

thought-out fixture. Erowa tooling systems are available for practically every application; integrated in our Flexible Manufacturing Concept (FMC), they make for a high degree of productivity. With fixtures produced according to customer requirements, Erowa's Fixturing Department now offers new, supplementary services. They range from engineering and production to the delivery of tested, operational fixtures.

Together with customers and their specific requirements, we develop ideas and create solutions. This results in ready-to-use custom made fixtures. Advice, design, production and assembly are as much a part of this service as are tests and production trials. Our customers will profit from our experience in manufacturing. Needless to say, all the fixtures can be perfectly integrated into Erowa's FMC concept.

We will develop any conceivable fixture for milling, grinding, EDM, quality measuring and numerous other applications. The components are de-



Erowa custom made fixturing systems

veloped, manufactured and assembled in our modern production plants. High delivery quality is a matter of course. Customer-specific fixtures are tested in production conditions and delivered ready for operation.

We also attach the greatest importance to the quality aspect of customer-specific solutions. Our tailor-made fixtures fit seamlessly into Erowa's FMC concept: with the high-precision CMM Qi measuring station, the precision of the parts produced can be checked at any time. The automatic loading/unloading of machine tools enables the productive utilization of marginal and night hours. And Erowa Process Control Systems provide a quick overview of all the production cells.

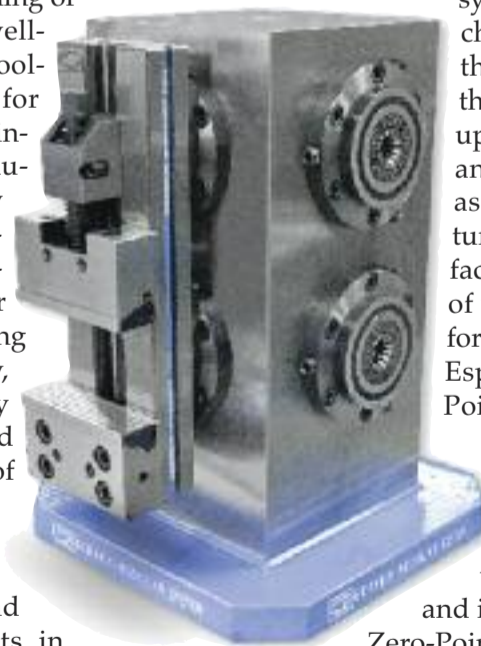
The new service attracted great interest at once. A whole range of customer projects have already been realized and Erowa is looking forward to the next challenges.

Further information on: Erowa - Phone +41 (0)41 935 12 46

### Modular system

Gerardi Modular Precision Vises are designed to cover most machine shop workholding requirements at lowest overall cost. The Gerardi system, leader in Europe and world wide known, includes a large range of interchangeable beds, bed extensions, fixed and moving jaws and jaws inserts. Standard jaws have automatic "Down-Grip" inserts. Jaw widths from 100 to 300 mm, gripping any work length.

The Gerardi modular system also includes a very wide range of tombstones for horizontal machines, custom made head plates and special workholding fixturing



Tombstone and Zero Point for quickly fixing to increase productivity

systems for any kind of machine that, together with the Zero Point system for the quickest change and set up of any type of equipment and fixtures, make Gerardi as one of the few manufacturers able to design, manufacture and supply any type of workholding equipment for turnkey applications.

Especially with the Zero-Point for fixtures quick positioning and clamping fixing many operators have invested in order to equip their machines to increase productivity and improve production. The

Zero-Point system makes it possible to cut the time needed to set up the machine with minimal deadtimes dedi-

cated to positioning, and clamping workpieces or fixtures.

Gerardi produces also high performance Angle Heads for conventional machines and for Machining Centres and Driven Tools for CNC Lathes. These fixtures allow milling, drilling and tapping operations and have become internationally appreciated for their high quality and reliability. They are the ideal for your next aerospace, automotive or other high precision application.

Further information on: Gerardi - Phone +39 0331 303911

RM-50



# AUTECO

Via Circonvallazione N/E, 165  
41049 Sassuolo (MO) Italia  
Tel 0536 / 806030 Fax 0536 / 807361

Web: [www.auteco.com](http://www.auteco.com) e-mail: [info@auteco.it](mailto:info@auteco.it)

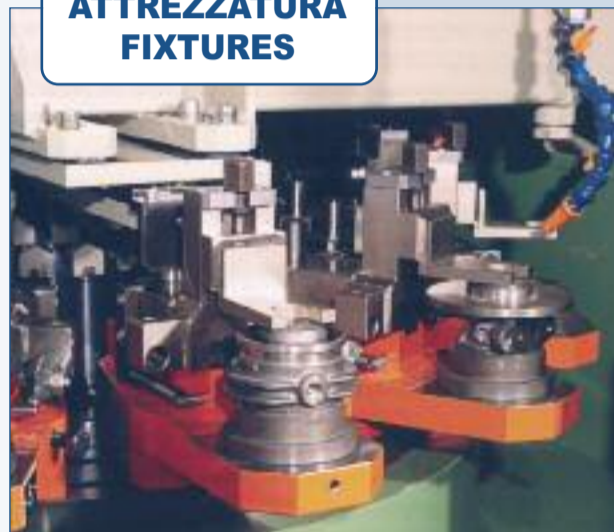
TF-15



RM-50



ATTREZZATURA  
FIXTURES



## LEVIGATRICI

Un'ampia gamma di macchine, utensili, accessori e oltre 30 anni di esperienza ci consentono di proporre la soluzione ottimale ad ogni problema di levigatura sia per piccole che per medie e alte produzioni richieste.

RV 250



## HONING MACHINES

A wide range of honing machine, tools, accessories and more than 30 years of experience enable us to suggest the suitable solution for every honing problem, for little, medium or high requested production.

UTENSILI - TOOLS



R12-50



TF-15



# Products



## Air knives and centrifugal blowers for metal sheets

Republic, an American company founded in 1962 with more than 50 years of experience in the branch, builds Centrifugal Blowers and Air Knives to install directly on the production line, made to dry, to clean and to cool metal sheets and parts in process.

Republic technology, applied to Centrifugal Blowers and to Air Knives, allows reaching high efficiency levels granting energy savings.

Centrifugal Blowers RB series provide a powerful air flux maintaining low energetic costs if compared to other blowing systems such as the ones fed with compressed air or the Regenerative Blowers. Combined with drop section Republic Air Knives, optimized to avoid backpressure, Republic Centrifugal Blowers grant high performances in drying, cleaning and cooling processes.

Built with high quality materials, such as the CNC Aluminum impeller, bearing packs lifelong oiled with cooling tabs, hybrid ceramic bearings whose length is about 5 times more than standard bearings and multiple PTFE gaskets.

Several models are available, 6 sizes with 3 HP – 75 HP engines. Compact dimensions for an easy placement.

Drop section Republic Air Knives avoid backpressure and permit high performances and efficiency in blowing operations.

Available in extruded anodized Aluminium or in AISI 316 stainless steel, length from 2" to 196", air input diameter 2"-3"-4".

The thickness of the loophole is adjustable up to 0,125" to control performances, supplied regulated at 0,045", optimal value for most of the operations.

The regulation of performances can otherwise be achieved through a VFD applied to the Centrifugal Blower speed.

Each Centrifugal Blower can feed more than one generator and/or nozzle. A series of accessories to tailor package the system is available, included air warmers for operations that need hot air blowing.

Further information on: Magugliani  
Phone +39 0331 380044

## Laser cutting system

The Piranha cut is an entirely new development. A compact machine for sheet metal sizes up to 400 x 400 mm<sup>2</sup>, a high contour accuracy ( $\pm 20 \mu\text{m}$ ) and suitable for sheet thicknesses of up to 3 mm. The cutting systems are equipped with air-cooled fiber lasers of different power ratings depending on the required application and are suitable for laser burn cutting and laser fusion cutting. Laser cutting systems by Acsys offer an innovation in the field of laser cutting - the camera system for laser cutting applications. The LAS



The new Piranha cut. Always a "cut" ahead



Centrifugal blowers and air knives made to dry, to clean and to cool metal sheets and parts in process

cut (Live Adjust System cut, patent pending) by Acsys shows the interior area of the laser cutting system on a screen. This way, cutting layouts can be positioned perfectly. NC-controlled or manually controlled rotary and swivel axes are available for the precise machining of cylindrical or conical workpieces. Another novelty by Acsys is the automatic distance control feature. The ADC (Automatic Distance Control) allows the laser cutting of curved sheet metal. The focus of the laser is set to the ideal distance across the entire workspace by the automatic distance control. This way, uneven material surfaces are automatically leveled.

### Hall 1 - Stand 1210

Further information on: ACSYS Lasertechnik  
Phone +49 (0)7154807113

## Slitted coated abrasive roller

C. Hilzinger-Thum, headquartered in the South of Germany, is a manufacturer of grinding, deburring and polishing tools and has over 100 years of experience in the processing of technical and decorative surfaces.

A new highlight is the slitted coated abrasive roller Type B3W. This roller ensures perfect deburring and edge rounding of lased parts, stampings and machine parts. The roller perfectly meets the demands of metal processing companies. Type B3W comes up to the highest expectations and ensures outstanding durability. By selecting appropriate coated abrasives, the roller can be used both in wet and dry operations. Wet operation is always convenient if the processed parts include different materials and/or lubricated parts are to be processed. Type B3W is able to round the edges thoroughly, to remove the oxide layer on the narrow sides and/or to achieve a fine surface finish. The edges of the work piece are rounded perfectly on all sides.

### Hall 1 - Stand 1602

Further information on: C.Hilzinger-Thum  
Phone +49 (0)7461187180



Slitted coated abrasive roller Type B3W

## Servo drive of the second generation

Haulick + Roos specialises in the development and manufacturing of precision stamping and forming presses from 250 to 4000 kN and related peripheral equipment.

At the Blechexpo 2013 trade exhibition, Haulick + Roos will launch its innovative servo drive for machines with pressing forces from 250 to 1000 kN.

The company's presentation will thus focus on servo technology that has become increasingly popular in industrial production over the last few years. With its FSD flexible servo drive solutions, Haulick + Roos is responding to the latest demands of the market. Ser-

vo technology is developing rapidly, and Haulick + Roos now offers its customers two-stage gears for precision presses from 250 to 4000 kN.

At pressing forces up to 630 kN, these units cater for up to 400 strokes per minute. Furthermore, all currently marketed machines can be upgraded with this innovative technology, enabling operators to optimise their production as regards output rate, product quality and flexibility.

Haulick + Roos is proud to present its new servo drive of the second generation – a top quality press drive that sets new standards. Our engineers succeeded in developing a compact drive system whose capabilities are simply unrivalled.

To make advanced servo drive technology available for processes with relatively low forces,



Precision stamping and forming press ROP 2000 – 2000 with FSD – Flexible Servo Drive

### Hall 6 - Stand 6412

Further information on: Haulick + Roos  
Phone +49 (0)7231/5805-0

## Precision metal deep-drawn parts

Euscher is constantly setting new standards. Its precision metal deep-drawn parts and complex assemblies have made us one of the leading European manufacturers today.

They are an innovative, specialized partner to the packaging industry, the electronics industry and the automotive industry.

In-house development of production technology, including tool design, tool construction and model-making, is an important part of our strategy and has always formed the basis of our technological development. A constant improvement process and training specialized employees safeguards

and strengthens this basis.

### Hall 4 - Stand 4401

Further information on: Euscher  
Phone +49 (0) 521 80009 123



Precision deep-drawn parts made by Euscher

**EUROIMPIANTI**  
MACCHINE PER VERNICIARE  
PAINTING EQUIPMENT

**EUROIMPIANTI SRL**  
Via Cavotti 44, 37067 Valeggio sul Mincio - Verona (VI) tel. +39 045 7280777  
Fax +39 045 7660020 - info@euroimpianti.com - [www.euroimpianti.com](http://www.euroimpianti.com)  
**EUROIMPIANTI DO BRASIL** - Indústria de máquinas para pintura LIDA  
Rua João José, 225, Jurema, 13087-900 Jundiaí - São Paulo - Brasil  
Fone +55 13 3412 2121 - info@euroimpianti.com.br - [www.euroimpianti.com.br](http://www.euroimpianti.com.br)

**advanced research and development**  
**solutions for any metal surface**  
**modular and customized systems**  
**productivity for each size and quantity**

**Italian experience worldwide warranty.**

**We believe in continuous improvement. Our customers believe in us.**

- Energy saving**  
New generation technologies for ensuring the lowest environmental impact.
- Fast assembly**  
Process standardization for customized painting lines assures fast delivery and assembly.
- Local staff**  
Specialized technicians are constantly trained by us for a prompt assistance in your country.

**ASSERVIMENTI PRESSE**

via Strada Longa 809 n. 10  
26815 Massalengo (LO)  
tel +39 0371 482096  
fax +39 0371 482775

Traditionelle und Kompakte Zufuhranlage für Bandbreite von 200 bis 2000 mm, Banddicke bis 18 mm und Haspel Tragkraft bis zum 25 Tonnen.

Sie finden uns auf der Messe **Blechexpo**  
Halle 8 Stand 8309

Von unserer Internetseite kann man kostenlos ein Programm für Coil Gewicht Berechnung herunterladen  
e-mail [info@asservimentipresse.it](mailto:info@asservimentipresse.it) web-site [www.asservimentipresse.it](http://www.asservimentipresse.it)

**alumotive**

11-13 JUNE 2014  
VERONA - ITALY

EXHIBITION ON INNOVATIVE SOLUTIONS, COMPONENTS AND TECHNOLOGICAL MATERIALS FOR ORIGINAL EQUIPMENT FOR THE TRANSPORT INDUSTRY.

**Original equipment for the transport industry: TECHNOLOGY, SOLUTIONS, INNOVATION.**

[www.alumotive.com](http://www.alumotive.com)

Along with **metef** Main sponsor **UBI** Banco di Brescia

INNOVATION

milkadv.it

# Products



## Patented high-performance ceramics for reliable processes and standardised operations

The Doceram Advanced Ceramic Solutions develops and produces highly precise, wear resistant and multi-resistant machine parts made from high-performance ceramic. Our own individually engineered ceramics are patented material with outstanding qualities, e.g.: Cerazur®: "the blue ceramic", high impact resistance and bending strength, Volcera®: "the grey ceramic", thermal shock resistant, extreme wear resistant and light weight.

Abrasion resistance, hardness, fit, thermal shock-resistance, resistance against humidity and chemicals, "low-friction" surfaces and durability ensure highest effectivity and economic efficiency. The results are top production speed, secure processes with utmost precision, at the same time multiplication of warranty and compliance with strictest dimensional tolerance. Examples of the product range: positioning pins, cen-

tring pins and jigs for welding technology (standards and customized), (drawable) alignment pins, gas nozzles, forming rollers, rocker arms for cam shafts, thread guides, maintenance-free pumps.

Doceram realises innovative solutions, tailored to customer requirements through the application of material know-how, FEM (finite element method) calculation of component stresses at the preliminary design stage, complete solutions in composite materials and implementation by a high tech train of machines. The synergy of this interaction results in a technically and economically ideal end product.

### Hall 7 - Stand 7404

Further information on: Doceram - Phone +49 (0)23192500950

## Superior fluids for all applications

The Company which was founded by Carl Christian Held in 1887, has become the corporation group as we know it today. In his day, Held could never have imagined that his company would be amongst one of the leading manufacturers of high-tech lubricants. In the following summary, we will outline to you just one example of the high requirements fulfilled by oelheld. Innovative Fluid management and constant product development and quality assurance are the key to the success of our products. oelheld GmbH has received ISO 9001 & ISO 14001 accreditation, these are evidence of solid standards regarding our products and our commitment to service quality. Our high performance lubricants of the DiaPress and DiaCut series are designed for all available punching and deep-drawing processes, all products are free from chlorine and heavy metals.

Selected base oils and additives guarantee mechanical and thermal stable lubrication with very high compressive strength for best possible material flow and for lowest possible tool wear. Specially designed pro-

ducts for your punching and deep drawing process, our products offer best wetting and parting characteristics regardless of the material you are processing – punching of thin aluminium sheets or heavy duty deep drawing and fine cutting operations with high alloyed steels.

Application area:

- ◆ Electronic components
- ◆ Rotor and stator plates
- ◆ Headlamp housings
- ◆ Auto body components
- ◆ Air conditioning and refrigeration engineering
- ◆ Fine cutting parts
- ◆ Hose clampers from high alloyed steels
- ◆ Manufacturing of aluminium slugs
- ◆ Tube bending and drawing

The benefits:

- ◆ Free from chlorine and heavy metals
- ◆ Low or free from residues on the work piece
- ◆ Weldable without washing
- ◆ Paintable
- ◆ Is evaporating ash free during the annealing process
- ◆ Easy to wash off
- ◆ Sprayable, also electrostatic application is possible
- ◆ Suitable for all kinds of materials and alloys
- ◆ Perfect wetting and protection for your multi station tools
- ◆ Additional corrosion protection

### Hall 6 - Stand 6306

Further information on: oelheld - Phone +49 (0)7116863-0



DiaCut – DiaPress, Punching and deep-drawing lubricants (by oelheld)



Guide bars made of Cerazur®  
Extremely high abrasion resistance, extremely high form stability



Longitudinal cut and winding  
Transversal and combined cut  
Laser cut lines and stamping  
Flying shears  
Bending plants  
Sheet metal machinery








Technology is our know-how  
Know-how is our technology

GABELLA MACCHINE spa - Via Monte Orfano 12, 13064 Crevinacco (BI) Italy  
tel +39 015 7696411 fax +39 015 7696490 www.gabella.it info@gabella.it

## La soluzione intelligente




## per il bloccaggio




## e l'automazione



F.LLI CANTINI

COSTRUZIONI MECCANICHE DI PRECISIONE

50051 CASTELFIDRENTINO (FD) Italy  
VIA G. BRODOLINI, 11 - Z.I. PONTE A PESCIOLA  
TEL. 0571 64044-61045 FAX 0571 64654  
www.cantini.it - e-mail: cantini@cantini.it



Products

Boosting production performance

Machine Data Acquisition and electronic data provision create a more convenient working environment in production halls. Increasing numbers of companies in the metal industry are recognising this fact and making use of Operation Data Acquisition from ProSeS. Investing in Operation Data Acquisition will pay off



Production Monitor in use

if the right system is selected; ultimately, the system has to be suitable for its environment in order to be useful and fit into the production process. ProSeS offers an ODA system that has been specifically designed for the metal industry and includes several industry-specific functions based on production methods such as mounting, punching and multi-stage production orders. The ODA system makes the machine data both clearly visible and useful. In practical terms, this gives users a better overview and enhan-

ced convenience in their day-to-day production work. And the underlying concept is as simple as it is effective. The less effort a production manager has to put into obtaining information from the production process, the quicker and easier it is for them to react to it – and what is more, they can maintain an overview of downtimes and address issues such as saving energy. The bottom line is that this means more convenience and lower expenditure for the production plant. These reasons and more are why ProSeS has become Germany's number 1 choice for ODA/MDA in the plastics industry. As an ODA supplier, it represents an expert point of contact for the metal industry too. ProSeS is looking forward to joining forces with the HOCHFORM initiative when it mans the joint stand at the Blechexpo trade fair. The initiative is a network of local companies whose focus is on precision metal-working methods.

Hall 4 - Stand 4104

Further information on: ProSeS – Phone 07231 / 14737 - 39

Presses innovation from Spain

Loire Safe is leader in "Press Hardening" / Hot Stamping. From the first line supplied with this technology in 1.998, Loire Safe has specialised in the manufacturing of complete installation "turnkey". Nowadays Loire Safe has designed, manufactured and supplied more than 30 % of the lines installed all around the world.

Their manufacturing program also includes:

- ◆ Production Lines of presses for manufacturing mainly automotive parts with moving bolsters quick clamping systems, robots or feeders for blanks loading/unloading etc.
- ◆ Hydraulic Try Out Presses with moving bolsters, blanking dampers, parallelism control device etc.
- ◆ Other types of Hydraulic Presses (for Aerospace ,

Forging etc.).

Between their customers you can find very well known OEM's and TIER's 1.

Loire Safe is the biggest Spanish manufacturer of Hydraulic Presses. The latest technologies used by Loire Safe as well as the good quality price rate of our presses make their customers being pleasantly surprised by their know how.

Hall 8 - Stand 8111

Further information on: Loire Safe – Phone + 34 943331214



Hydraulic press by Loire Safe high form stability

www.lucas.eu

Lucas è un'azienda TRIDENTINALE nella produzione di macchine per la lavorazione delle lamiere. Grazie al suo Know-how, alla costante ed innovativa ricerca della migliore prima, dei componenti e all'attento controllo della qualità delle lavorazioni, Lucas occupa una posizione di rilievo sul mercato mondiale delle macchine di forma di una vasta gamma di macchine, standard o appositamente progettate su richiesta, singole o inserite in linee complete di produzione, che comprendono:

- linee a rotelle e bobine per lodi e piegatura
- macchine forgiatrici e per la lavorazione di tubi
- ribattitura e bordatura
- macchine speciali e combinati
- macchine progettate su specifiche del cliente
- linee di produzione complete

Diamo forma al metallo



mod. VBU 430 SW - Linee di ribattitura e bobinatura per "gas bottle"

38010 Caviglioglio - VI - Italy  
Via IV Novembre, 3  
T. +39 0445 851722 / 850540  
F. +39 0445 850162  
info@lucas.eu

progettazione e costruzione  
macchine per la lavorazione  
delle lamiere



Piegatura più rapida che mai.  
La TruBend Serie 7000.

Componenti macchina in fibre di carbonio del giusto peso e un'ergonomia studiata con intelligenza facilitano la lavorazione delle lamiere con velocità particolarmente elevata, soprattutto di quelle il cui formato non è più grande di un foglio A3. Questo rende le nuove TruBend Serie 7000 le piegatrici più veloci del mondo.

www.it.trumpf.com



## Products



### High quality replacements and consumables

Richardson Electronics will be showcasing high quality replacement end stage tubes and consumable products at this year's BlechExpo. These products are used in Trumpf and Bystronic CO<sub>2</sub> lasers and includes the Thales made RS3021CJ and RS2048CJC end stage tubes, nozzles, lenses, dust collection filters, bellows, air filters and water filters. With our expanded portfolio of high quality aftermarket parts, we ensure the lowest cost of ownership to help laser users around the world become more competitive. Through our global service network, Richardson Electronics now offers remanufactured driver stages that are used in Trumpf CO<sub>2</sub> lasers. Each unit undergoes a thorough 38-point inspection process and is tested and burned in for 24 hours before delivery.

#### Hall 1 - Stand 1131

Further information on: Rellaser  
Phone + 49 (0)89-890214-41

### Competent steel service

EMW Steel Service Centre will be presenting itself at Blechexpo, sharing a stand with Schäfer Perforated Metal. Both companies are part of the internationally successful Schäfer Werke based in Neunkirchen in the Siegerland region. Thus they combine a large stock of steel sheets with the manufacturing capacities for processing them, both within the same group of companies. This synergy is hardly found anywhere else in the German steel industry, and it enables quick communication and high flexibility to the benefit of mutual customers. The shared stand at Blechexpo emphasises the fact that customers can profit from the joint competency of two major suppliers. Both EMW and Schäfer Perforated Metal cater to customers from the automotive industry, among others. EMW supplies the automotive industry with slit-strips and cuts which are usually used for making body parts for cars. In addition to softer types of steel for deep drawing, EMW also supplies high-strength steel for safety-relevant parts which need to withstand crashes. With a stock of approximately 100,000 tons of steel sheets in practically all standard qualities, accessible at any time, and with five production lines for cutting the sheets, EMW supports just-in-time delivery according to customer specifications. Further important fields of application for perforated metal include sound protection, retail design, and architecture. With more than 400 readily accessible patterns for perforations, Schäfer Perforated Metal offers, among other things, designs for exterior wall cladding, sound protection panels, but also shelves and seats. With a large variety of available tools, Schäfer Perforated Metal guarantees comprehensive possibilities for creating perforated metal from steel, stainless steel, and aluminium.

#### Hall 5 - Stand 5101

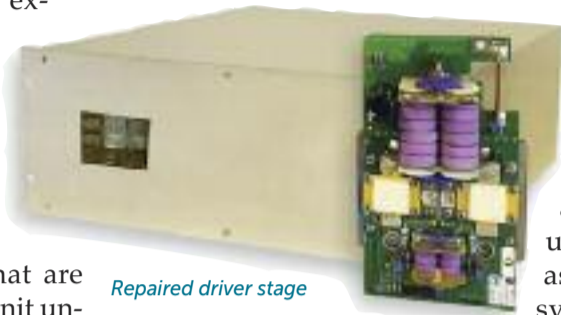
Further information on: Emw and Schäfer  
Phone +49 (0)821 34300-19



With five production lines for cutting the sheets, EMW supports just-in-time delivery according to customer specifications

### Your partner for punching and bending technology

Since more than 60 years Steinel, registered office in Villingen-Schwenningen, provides the worldwide market of high-end tool design and construction with Standard Parts and is emerging to be a system partner in this industrial sector. Steinel is your partner in all respects of punching and bending technology. The German rooted family-run enterprise offers its customers Standard Parts in standard and customized size as well as support in realization of complete solutions. This includes all productivity: The own product development process as well as the construction and placing system modules at the disposal.



Repaired driver stage

Therefore we warrant top level process reliability and highest quality as well as accuracy along with appropriate service. In order to offer a maximum of service and to achieve optimal increase in efficiency as to the punching and bending process Steinel offers all productivity from one source: guide units in standard and special size; tool frames and function slabs; manifold plates and composite systems; system- and gas pressure springs; process integrated-thread-moulding; complete tools for follow-on composite tool technology and Bihler technology; process and tool optimization; active elements and spare parts management

**Hall 6 - Stand 6408**  
Further information on: Steinel  
Phone +49 (0) 77 20 / 69 28-0



Steinel punching and bending technology

### Special cold rolled profiles

Sika is renowned as being one of Europe's most dynamic manufacturers of cold-rolled profiles. The company has been operating in the field of metal forming for several years accumulating a wide experience. Nowadays its experience has allowed Sika to be in strong command of a high level of technology used for the cold roll-forming of various types of sections: open and closed. The closed sections can be either seamed, clinched, or welded with HF induction system. The profiles can be cut to different sizes with the required precision. Punching of holes and slots whenever required are made with automatic on-line process. A few years Sika ago has launched the fabrication of metal accessories obtained through cold forming using multiple tonnage Presses equipped with feeding lines.

The raw materials used for its products are: galvanized steel, prepainted steel, stainless steel, pickled steel, aluminium, copper alloys.

Sika is totally committed to produce special profiles and accessories offering the ultimate in quality and performance having achieved the ISO9001 Certificate. OHSAS 18001 Certificate is presently being evaluated.

Sika's aim is focused on establishing a partnership with each customer and developing long-term relations built on trust. customers' specific ideas are transformed into customized design and finally into real metal sections and accessories to be then used for fabricating products belonging exclusively to the customers' concept.

Accuracy, strict tolerances and high quality standards are the leading features of all Sika products, which are successfully used

by its customers for manufacturing: in photovoltaic roofing; shelves and stands, libraries; furniture: chairs, beds, sitting units; structures for lights, lamp- rods; windows, doors, shutters; gates, fences; automatic devices for doors, gates; components for the automotive industry and ship-building; lifts, escalators; components for agriculture and animal feed.

#### Hall 5 - Stand 5404

Further information on: Sika - Phone +39 0422 38.12.11

### The perfect manner of bending sheet

Today normally elaborately designed and cost-intensive bending stations are used during the bending and forming of sheets. But not only the effort has a sustainable effect but also the streaks and scratches arisen after the process are normally not desired.

Three new types of bending units present themselves as compactly constructed forming stations and offer a number of advantages during the application. They differ mainly in the different manner of fixation. For examples their compactness makes the utilization of elastic downholders unnecessary. The bending unit overbends the sheet metal article exactly in the desired dimension to compensate the normal back spring force of the sheet. The result is an exactly formed sheet. The smooth process of the bending avoids the sliding and the raising of the material. Also marks on the forming part are eliminated by the generously stressed bending surfaces.

A further advantage during the utilization in the series production is the high repeat accuracy. This ensures that the same angle bendings and flank heights can also be reproduced after many forming processes. The high process stability being reached by the bending units takes care for a high position accuracy concerning the hole positions recurring in an article.

After each operation the bending insert is placed back in the initial position by the spring force in a rotation-



New bending unit provides for high repeat accuracy

al movement. Thus the scratches on the article surface arising inevitably by the return stroke during the utilization of a forming station are excluded.

Moreover these bending units allow the classic forms like the overbending (with angles under 90°), open bending (over 90°), Z- and double bending and also crushed variants within the defined tolerance. Material thicknesses of 0.3 up to 8 millimetres can be processed.

#### Hall 4 - Stand 4414

Further information on: Stack - Phone +49 2351 8701-254



Sika's profiles

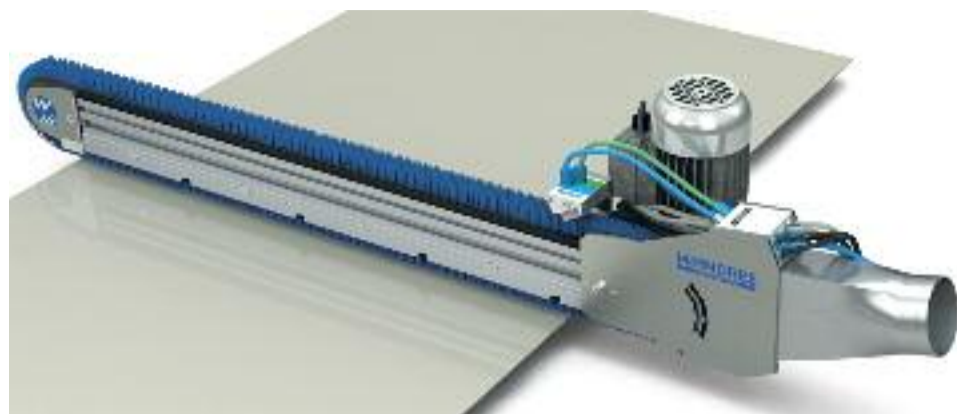


**Cleaning of blanks, tailored blanks and coils**

For more than 30 years, the company Wandres micro-cleaning has been specializing in the development and the production of innovative brush and compressed air driven cleaning systems. Effective removal of dust and very small particles on surfaces is vital for a great number of production processes in order to produce high quality products. Sword Brushes may clean blanks for body skin parts of automobiles before the deep-drawing and the stamping processes up to a transport speed of 180 m/min. Particles and dust that are caused by punching, laser cutting or sanding processes have to be removed from the production surfaces before these are further processed. Sword Brushes that clean metal strips should be installed before the leveling rollers in order to avoid marks and surface errors.

**Hall 8 - Stand 8110**

Further information on: Wandres - Phone +49-7661-9330-556



Sword Brush BIP 46

**Metal grinding machines, automation and total system solutions**

With the development and market launch of the Lissmac line, consisting of steel brushing, grinding, deburring and deslagging machines, Lissmac has revolutionized sheet metal processing and is now one of the market leaders in the industry.

The highly effective method of double-sided processing of inner and outer edges in one single pass is unique to the market.

With the acquisition of the metal division of Buetfering and the resulting addition of the Steelmaster premium brand to the portfolio, Lissmac is taking another step forward and is now offering their customers the additional application possibilities of a defined surface finish in wet or dry operation. With the business divisions of Metal Processing, MT-Handling and Plant Engineering, Lissmac is capable of automating all aspects of parts processing, from edge treatment of cut sheet metal parts to having them picked up from the respective cutting machine, to getting them palletized - all precisely according to customer requirements.

**Hall 1 - Stand 1505**

Further information on: Lissmac - Phone +49 (0)75643070



Lissmac deburring machine SBM-XL 1000 G2S2 with dust suction and transport belts

**MACCHINE PER LA LAVORAZIONE LAMIERA  
SHEET PROCESSING MACHINES**



LINEE COMPLETE DI RADDRIZZATURA,  
TAGLIO IN FOGLI, STRISCE E RIAVVOLGIMENTO  
FINO A mm. 1500 X 2.5  
STRAIGHTENING, CUT TO LENGTH AND SLITTING  
COMPLETE LINE UNTIL mm. 1500 X 2.5



AVVOLGITORI DA mm. 1500 X 2.5  
PORTATA 5 TON.  
RECOILER CAPACITY 5 TONS 1500 X 2.5 mm



LINEE DI RADDRIZZATURA E TAGLIO COMPATTE  
CON TRACCIATURA ELETTRONICA  
COMPACT CUT TO LENGTH AND SLITTING LINE  
WITH ELECTRONIC SCROLLING UNIT



Via Puccini, 28 - 40055 Villanova di Castenaso - Bologna  
Telefono 051/78.11.22 - Fax 051/78.13.31  
E-mail: grandini@grandini.it - www.grandini.it

**CLEARVISION**

**Una chiara visione della vostra produzione**

Oblò rotanti ad aria compressa, indispensabili per garantire la visibilità durante le lavorazioni attraverso le finestre di macchine CNC. Semplici da installare, sicuri, funzionano ad aria compressa, i più sottili in produzione



Oblò CLEARVISION diam. 252 mm spessore 25 mm

**NUOVO PRODOTTO**  
catalogo in anteprima  
"guarda i video su youtube,  
cerca: maguglianisri"



Oblò rotante CLEARVISION spento, la visibilità della lavorazione è compromessa dal liquido refrigerante



Oblò rotante CLEARVISION in funzione, la visibilità della lavorazione è perfetta



21052 Busto Arsizio (VA) ITALY  
Via Sacro Monte 3/1  
tel +39 0331 381789 380044/28  
fax +39 0331/684344

# Products



## Punching Technologies

1877 established, Uebele offers today the complete production portfolio of punching techniques.

This includes fine blanked components, stampings, pressed, drawn and deep drawn parts as well as metal spinning parts, which are distributed worldwide. Not forgetting the production of assemblies and cutting tools in its own tool shop.

With the acquisition of the company Wehle in 2012 and the extension

of a further production hall in 2013 Uebele is investing in the future. Particularly Uebele is proud of the new 6300 kN punch press, which was put into service middle of this year.

The special features of the wide range of products are fine blanking (up to 3200 kN), sophisticated punchings and complex deep drawn components up to 4000 kN. The range of parts includes amongst others flanges, brackets, contacts, fittings, shielding plates, spacer rings, housings and bushings. At Blechexpo 2013 Uebele is presenting high-quality and technologically sophisticated parts out of its product portfolio.

### Hall 4 - Stand 4503

Further information on: Uebele  
Phone +49 7161/99924-16

## Heat treatment lines

Heat treatment lines made by Schwartz can be found in manufacturing plants worldwide, wherever automotive body parts are heat-treated to boost their strength. The company's furnace equipment is noted for its unsurpassed cost-efficiency, high availability and exceptional process reliability. Fast-paced growth in demands, e.g., regarding surface finish, varying hardness levels across the part, e.g. in hot-formed 'tailored tempered blanks', and component lightweighting is addressed via an ongoing refinement of heat treatment furnace systems. Diverse furnace designs are adopted, depending on require-

ments and local circumstances, and coordinated in detail with the prospective user. In these furnaces, the parts can be heat-treated in a normal atmosphere, in controlled inert or reactive atmosphere or in dried air. Automation systems of proven safety and dependability ensure minimum cycle times and high availability levels. In addition, Schwartz's product range comprises hardening



Stampings

lines for steel forgings as well as solution annealing lines with water quench for aluminium castings and forgings, profiles, tubes and bars intended for use in aerospace and automotive applications.

### Hall 8 - Stand 8204

Further information on: Schwartz  
Phone + 49 (0) 2473 9488-24

## Future-oriented technologies for meet the greatest cleanliness requirements

More and more industries are demanding levels of cleanliness that extend far beyond the norm. For example, in the automotive and automotive supplier industries there is increased demand for ultra-clean components for chassis, injection and steering systems as well as electronic drives. The VIA surface technology is ideally equipped for these requirements and has become an expert in metal cleaning and degreasing technology.

As a classic service provider for surface cleaning VIA offers the following services: degreasing, precision cleaning, vibratory grinding, ball burnishing, control- and packaging service as well as the execution of residual dirt analyses to VDA standard.

In order to meet the most exacting demands regarding particle and film component cleanliness, VIA Oberflächen-technik provides precision cleaning



The PSH press drive permits optimal matching of force and speed. It also provides energy savings of up to 60 percent

processes using ultra-modern cleaning equipment. The systems are connected to a cleanroom via encapsulated roller conveyors. Depending on the actual job description, the cleaning is done using watery media, hydrocarbons or modified alcohols. This ensures the optimum cleaning results and for metallic particles, a particle limit of <math><100\mu\text{m}</math> can be achieved. The service portfolio includes packaging cleaned components in the

conditioning, training, maintenance and repair. The sensor equipment adds more diagnostic options that support preventive maintenance and repair.

The CLDP (Closed Loop Differential Pump) servo drive is setting new standards: The self-contained linear drive is compact, highly dynamic and energy efficient. In addition, it offers the user all the advantages of a hydraulic system solution. These include overload protection, a high power density and virtually wear-free operation. Thanks to the integrated servo pump, the energy efficiency is far greater than that of conventional solutions. The CLDP servo drive can be used for all direct linear motions – primarily when dynamic response, reproducibility and reliability are needed.

The Voith product portfolio covers punching systems from the low level all the way to high-end machines. Proven components such as power packs with energy-efficient pumps and the load-following dual-pressure system with separate accumulator circuits for low pressure and high pressure are the guarantee for energy-saving systems. Voith punching systems impress with a simple installation using preprogrammed software modules. The electrohydraulic HPPC punch drive is the most powerful Voith punching system and runs at up to 1,500 cycles per minute. The HPPC is a programmable high-performance drive. The lifting cylinder operates in a hydromechanical control circuit and satisfies every demand placed on a high-performance punching drive. Besides the high cycle rate for punching and nibbling, it also can operate with precision during forming.

Over the midrange, the new Voith HDM punching system impresses with considerably reduced costs, while keeping the precision just as high. The HDM punching system is specially optimized for punching, nibbling and forming applications and is distinguished by particularly high power. The load-dependent dual-pressure system provides for an optimal power balance in the system. This results in lower energy consumption with outstanding performance. At high pressure operation, the reduced speed lowers the noise and reduces the load on the machine.

### Hall 8 - Stand 8314

Further information on: Voith  
Phone +49 7951 32-429



Cleaning plants connected to a cleanroom

clean room to ensure that cleanliness is maintained. Residual dirt analyses to VDA standard accompanying production can be carried out in an own laboratory.

### Hall 4 - Stand 4408

Further information on: VIA  
Phone +49 (0)2721-71890-15

## Hydraulic systems for sheet-metal processing

"Engineered Hydraulics" – With this slogan, Voith will present advanced hydraulic systems for sheet-metal processing machines and systems at Blechexpo 2013 in Stuttgart (Hall 8, Booth 8314), running from 5 – 8 November. The focus is on the PSH press drive and the newly developed CLDP servo drive. Voith will also present the product portfolio of punching systems.

In the hydraulic PSH press drive, a servo pump replaces the classic valves and controls. This allows an optimal matching of force and speed to the press process and reduces the complexity of the press drive. The modular design makes system integration particularly simple, both for new systems and retrofits. Energy savings of up to 60 percent over conventional systems are possible. The PSH total concept also provides the operator with lower costs for commis-



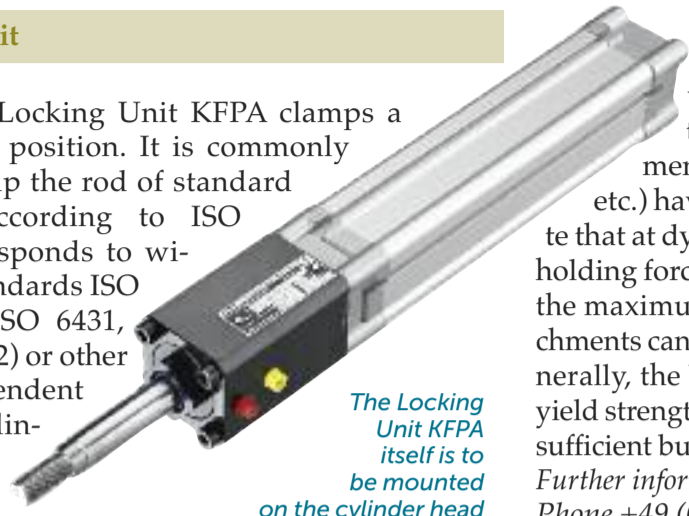
Heat treatment (with or without protective and reactive atmospheres) in the fields of hot-form hardening, hardening, annealing, sintering and brazing

Blechevan

Products

Locking Unit

The Sitema Locking Unit KFPA clamps a shaft in any position. It is commonly used to clamp the rod of standard cylinders according to ISO 15552 (corresponds to withdrawn standards ISO 6431, DIN ISO 6431, VDMA 24 562) or other shafts independent from the cylinder. It holds axial forces in both directions.



The Locking Unit KFPA itself is to be mounted on the cylinder head

The Locking Unit KFPA is prepared to be mounted on a cylinder according to ISO 15552 or on a separate rod. The Locking Unit KFPA itself is to be mounted on the cylinder head. In applications without cylinder, with centering ring the Locking Unit KFPA shall be used on a separate rod.

This type of mounting is only admissible in combination with the centering ring which has to be ordered together with the unit.

The support surface on the machine element must face the centering ring side of the Locking Unit KFPA. The possible axial displacement in both directions is 0,1 mm.

The Locking Unit KFPA will operate correctly only if the rod has a suitable surface:

- ISO tolerance field f7 or h6
- Surface roughness: Rz = 1 to 4 µm
- Rod surface hardened (min. HRC 56)
- Lead-in chamfer min. 3x20°, rounded

An additional hard chrome plating 20 ±10 µm, 800 – 1000 HV is recommended.

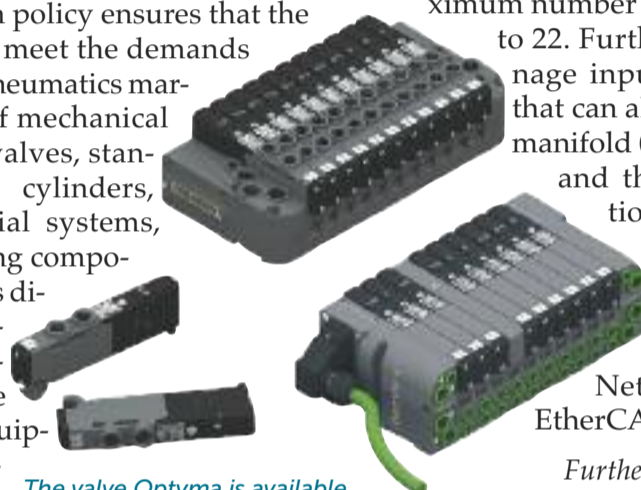
The actual holding force of the Locking Unit KFPA is

higher than the nominal holding force indicated in the data sheets and drawings, but will not be higher than twice this value. Therefore, all fixation elements carrying the load (rod, its attachment, etc.) have to be dimensioned for 2 x F. Please note that at dynamic loads (e.g. when braking), the full holding force (2 x F) can occur. Only if it is certain that the maximum loads are effectively smaller, the attachments can be designed for these smaller values. Generally, the basic rod material has to have sufficient yield strength. In the case of compression-loaded rods, sufficient buckling resistance must be assured.

Further information on: Sitema  
Phone +49 (0)721 986610

Electro-valve

Pneumax offer a wide and technically advanced product range which has been designed to satisfy the most demanding applications. The comprehensive investment and production policy ensures that the company is well placed to meet the demands of the highly competitive pneumatics market. The extensive range of mechanical and electrically operated valves, standard and non-standard cylinders, FRL's, electronic and serial systems, electrical actuators, handling components, accessories, as well as didactics, means that the range of products are continuously evolving using the best software and design equipment available on the market. The wide variety of products has been developed to



The valve Optyma is available in 3 different types 'F', 'T' have a 19 mm body, whilst the 'S' type has a smaller 12.5 mm body

meet the needs of each industry sector, with versatility and reliability to optimise costs and performance. The Optyma32 range includes a modular assembly design with either body ported or sub-base connections both with integral electrical connections. The valve is available in 3 different types 'F', 'T' have a 19 mm body, whilst the 'S' type has a smaller 12.5 mm body. The first two versions 'F' and 'T' have a flow rate of between 800NI and 1050NI and the 'S' version has a flow rate of 400NI.

This valve range has an interesting set of operating characteristics; low energy consumption, both solenoids actuators are positioned on the same side of the valve, fast assembly to the base with only one screw fixing, suitable for pressure and vacuum, multipolar connection with IP65 protection which can control up to 32 electrical signals (16 bi-stable, 32 mono-stable or any combination there-after up to a maximum of 32). The electrical connection is made via a 37 pin sub-D connector, however, a 25 sub-D version is available but this reduces the maximum number of electrical signals available to 22.

Furthermore, it's possible to manage input signals through modules that can also be assembled to the valve manifold (no field bus system required) and the technopolymer construction greatly reduces the overall weight of the assembly. It is possible to control the valves using field bus protocols with CANopen®, Device-Net®, PROFIBUS DP® and EtherCAT® nodes available.

Further information on:  
Pneumax  
Phone +39 035 4192777

**CAMUT**  
UNICO COSTRUTTORE MONDIALE delle famose RETTIFICATRICI

La rettificatrice Mini si distingue in modo particolare per la sua compatta e modulare che permette di realizzare una gamma molto estesa di modelli con:

- Corse trasversali mm 400, 500, 600, 700
- Corse longitud. da mm 500 a mm 8000
- Altezza massima rettificabile mm 250
- Potenza motore mola HP 10 - 70

Il modello Gemini ha l'applicazione del CNC, con il miniciclo di azione e motori Brushless

**Mola asse orizzontale MODELLO MINI E GAMMA**

La gamma completa prevede i modelli V1 - V2 - V3 - V5 indicizzati con il sistema piccolo, medio e grande. A richiesta viene applicato un CNC.

**Modello V1**  
Sono le costruttrici di una insuperata gamma di piccole e medie macchine prodotte dal 1946 nei vari modelli sempre al passo coi tempi.

**Modello V2**  
Costituiscono un punto di forza per il giusto equilibrio tra dimensioni del pezzo da lavorare, potenza e capacità.

**Modello V3**  
Sono le più potenti rettificatrici con mola ad asse verticale. Permettono lavorazioni elevandone il grado di finitura e precisione.

**Modello V5**  
Hanno la particolarità del mantello mobile e sono state progettate per lavorazioni di grandi particolari e grosse produzioni di piccoli.

**Mola asse orizzontale MOD. CREEP FORMATIC**

Contenuto di questo macchina è la massima lenità della tavola nel suo movimento di lavoro.

Veloc. di lavoro mm/min. 30 - 1000  
Veloc. Rapida di pos. Tavola mm/min 6000  
Lunghezza mola mm 200  
Diametro mola mm 508  
Motore comando mola  
Potenza 10 - 70 HP

Non solo COSTRUZIONE di Rettificatrici CAMUT, ricambi originali e assistenza tecnica ma anche: revisioni e ripar. Macchine utensili retrofitting ricambi originali e assistenza tecnica su impianti robotici SASS

SALUGGIA - VC - Via Tolosa 24  
Tel. 0161.486584  
Fax 0161.480107

www.camut.it  
info@camut.it

*Blue Philosophy: ecocompatibilità, sviluppo economico, responsabilità sociale. Il giusto modo di innovare.*

Le imprese concessionarie del marchio UCIMU, segno distintivo della più qualificata produzione italiana, sono tenute a realizzare macchine utensili che permettano agli utilizzatori di sfruttare razionalmente le risorse, minimizzando l'uso di energia, materie prime e mezzi. La "Blue Philosophy" è, infatti, criterio di attribuzione del marchio UCIMU, insieme a affidabilità commerciale, solidità finanziaria, massima attenzione per sicurezza e funzione collaudo, "cura del cliente" monitorata attraverso la metodologia Key Performance Index. Depositato a norma di legge, il marchio UCIMU viene concesso alle associate a UCIMU-SISTEMI PER PRODURRE in grado di dimostrare, attraverso esami approfonditi e severi (regolarmente reiterati), caratteristiche aziendali che nessuno schema di certificazione considera contemporaneamente. Per questo, il marchio UCIMU è espressione della qualità che cerca l'utilizzatore.

**IMPRESE CONCESSIONARIE DEL MARCHIO UCIMU**

**ABB** Sesto San Giovanni MI  
**ADIGE** Levico Terme TN  
**AUTOMATOR** Corsico MI  
**BALCONI** Varedo MI  
**BARIOLA** Legnano MI  
**BARUFFALDI** Tribiano MI  
**BERCO** Coppara FE  
**BIGLIA** Incisa Scapaccino AT  
**BLM** Cantù CO  
**BRAGONZI** Lonate Pozzolo VA  
**CARLO SALVI** Garlate LC  
**CARNAGHI MARIO** Olgiate Olona VA  
**CARNAGHI PIETRO** Villa Cortese MI  
**CB FERRARI** Mornago VA  
**CMS** Zogno BG  
**COMEC** Chieti Scalo CH  
**COSEMA** Mappano di Caselle Torinese TO  
**D'ANDREA** Lainate MI  
**DELTA** Cura Carpignano PV  
**DIPLOMATIC** Legnano MI  
**ECS** Sesto Fiorentino FI  
**ELBO CONTROLLI** Meda MI  
**ELESA** Monza  
**FICEP** Gazzada Schianno VA  
**FIDIA** San Mauro Torinese TO  
**GALDABINI** Cardano al Campo VA  
**GHIRINGHELLI** Luino VA  
**GIANA** Magnago MI  
**GILDEMEISTER ITALIANA** Brembate di Sopra BG  
**GIUSEPPE GIANA** Magnago MI  
**GOZIO** Ospitaletto BS  
**GRAZIANO** Tortona AL

**HEXAGON** Grugliasco TO  
**IEMCA GIULIANI** Faenza RA  
**IMET** Cisano Bergamasco BG  
**IMT** Casalecchio di Reno BO  
**INNSE BERARDI** Brescia  
**ITF** Mesero MI  
**JOBS** Piacenza  
**LAZZATI** Rescaldina MI  
**LTF** Antegnate BG  
**LOMA** Curno BG  
**LOTTI** Antegnate BG  
**MANDELLI** Piacenza  
**MARPOSS** Bentivoglio BO  
**MCM** Vigolzone PC  
**MECCANICA NOVA** Zola Predosa BO  
**MELCHIORRE** Cinisello Balsamo MI

**MILLUTENSIL** Milano  
**MINO** San Michele AL  
**OMERA** Chiuppano VI  
**OMLAT** Ceresole d'Alba CN  
**OMV** Caltana di Santa Maria di Sala VE  
**PAMA** Rovereto TN  
**PARPAS** Cadoneghe PD  
**PEAR** Firenze  
**PICCO** Castano Primo MI  
**PINTO** Torino  
**PRIMA INDUSTRIE** Collegno TO  
**RIELLO MACCHINE** Minerbe VR  
**ROSA** Rescaldina MI  
**ROSA SISTEMI** Legnano MI  
**ROTORMORS** Grugliasco TO  
**SACMA MACCHINE PER LAMIERA** Crosio della Valle VA  
**SAET** Leini TO  
**SAFOP** Pordenone  
**SALVAGNINI** Sarego VI  
**SERRMAC** Budonia PN  
**SICHAT** Pianezza TO  
**SIGMA TECHNOLOGY** Vigevano PV  
**SIRMU** Rivanazzano Terme PV  
**SKY THRIVE RAMBAUDI** Rivoli TO  
**SPERONI** Sostegno di Spessa Po PV  
**STREPARAVA** Adro BS  
**TACCHI** Castano Primo MI  
**TIESSE ROBOT** Visano BS  
**VACCARI** Brendola VI  
**VIGEL** Borgaro Torinese TO  
**VALCO** Milano  
**ZANI** Turate CO

Elenco aggiornato a 1 giugno 2013

**IMPRESA CONCESSIONARIA DEL MARCHIO UCIMU**

**UCIMU-SISTEMI PER PRODURRE**  
ASSOCIAZIONE COSTRUTTORI ITALIANI MACCHINE UTENSILI, ROBOT E AUTOMAZIONE  
viale Fulvio Testi 128, 20092 Cinisello Balsamo MI, tel. +39 02 262 551, telefax +39 0226 255 214/349, ucimu@ucimu.it  
www.ucimu.it

## Products



### Drying of liquid paints and gelling/curing of powder paints

Infragas Nova Impianti has acquired an experience of more 1400 ovens sold, assembled and followed with our assistance service, in Italy and in all over the world.

Infragas Nova Impianti has acquired a leader position in Italy and Europe developing the catalytic system with catalytic radiants without flame and electric radiants, applied to ovens of its production. Infragas Nova Impianti produces technical advice in order to solve the possible problems of:

- Upgrade of existing ovens, with addition of IR or convection modules;
- Modification of ovens on painting lines, for conversion from solvent base paint to water base paint;
- Gelling of powder paints, in order to avoid the flying of powder paints and therefore the contamination between different colours into the oven, in case of colour change;
- Design and supply of curing ovens IR + WARM AIR, also for materials that usually is impossible cure on convectional ovens, due to high temperature of polymerization of powder. With IR

ovens aren't necessary warm all the thickness of painted objects. Infragas Nova Impianti has various experiences in this way, with powder curing on particulars as car radiators, electro-pumps etc., already assembled, with gaskets and/or electrical wires;

- Design and supply of ovens and drying system for solvent base or water base paints on materials thermo-



Powder paint infrared curing oven, for gas cylinders

sensitive (plastic, MDF, ABS etc.);

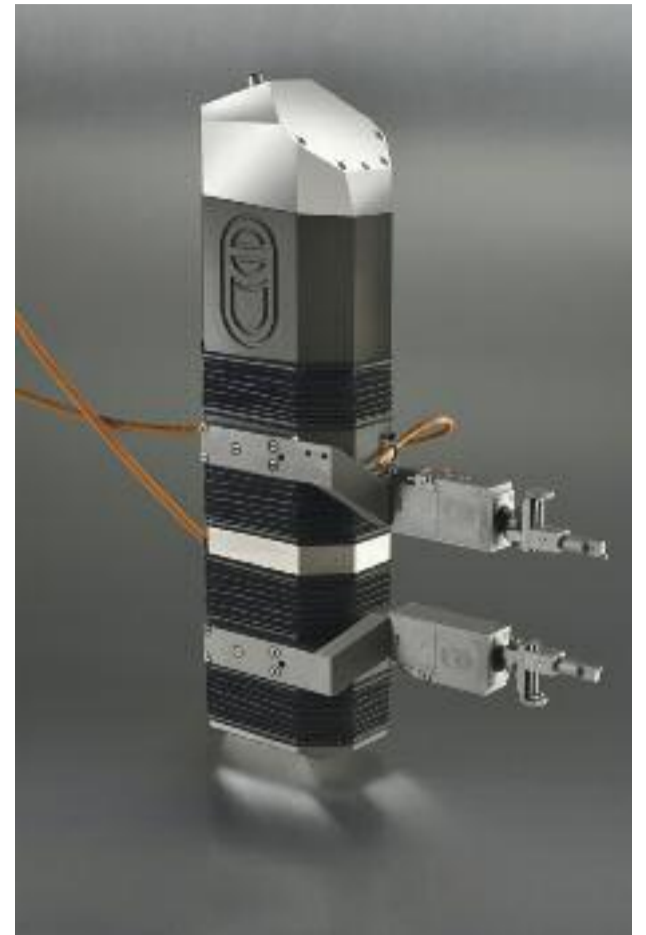
*Infragas Nova Impianti*  
Phone +39 011 9973971

### Absolute Gauge for Cylindrical Grinding Machine

Balance Systems introduces, at the EMO 2013, its newly developed absolute gauge model TopGauge A90 for Pre-In-Post-Process applications on cylindrical grinders.

TopGauge A90 holds a precision of  $\pm 1$  microns on the whole measuring range of 90mm with regular calibration on a single caliber. It can be mounted both frontally on the carriage and brought in the measurement position by a transverse slide, and above the workpiece and brought in measurement position by rotation. Since it automatically adapts quickly to the diameter being worked, with both continuous and interrupted surface, TopGauge A90 allows a high consistent quality of the production, in the machining of both single diameter and multi-diameter parts, together with an increase in flexibility and productivity, whatever the size of the batch being processed.

Top Gauge A90 is managed by the modular and multifunctional electronic unit



TopGauge A90 Absolute Gauge

model VM25 that, owing to its easily integration in all machine architectures, allows to optimize the grinding process in relation to the preset measurement thresholds in the current part program.

*Balance Systems* - Phone +39 02 9504955  
Hall 6 Stand B48

# KABELSCHLEPP

A member of the TSUBAKI GROUP

## Prima adesso sempre

KABELSCHLEPP  
DA OLTRE 50 ANNI



### Tecnologia testata nelle applicazioni di tutto il mondo

La qualità dei portacavi KABELSCHLEPP:

- Gamma di produzione in poliammide, acciaio e sistemi ibridi, per ogni soluzione applicativa
- Larghezze disponibili con passo di 1 mm
- Più di 100.000 varianti in acciaio e poliammide
- Larghezze di catena da 6 a 2500 mm
- Peso proprio della catena da 44 gr a 600 kg per metro
- Dalle singole maglie sino ai sistemi completi pronti per il montaggio

KABELSCHLEPP ITALIA SRL

Via Massari Marzoli, 9 - I - 21052 BUSTO ARSIZIO (VA) - Tel: +39 0331 35 09 62 - Fax: +39 0331 34 19 96 - www.kabelschlepp.it



UTENSILI FRATELLI MAGONI S.p.A.



Importatore esclusivo per l'Italia

UTENSILI FRATELLI MAGONI SPA

VIA MONTENERO 6/8 - 24020 RANICA (BG)

Tel. 035/514059 - Fax 035/511029 - info@magonispa.it





Products

Powder and liquid coating systems by Euroimpianti

More than two thousand coating lines installed in 36 years, production plants in Italy and Brasil and sales offices in many countries, active laboratory for testing the latest r&d technologies, modular design and production in series: these are some of the reasons why customers choose Euroimpianti.

Euroimpianti is an Italian designer and producer of powder and liquid complete coating systems: every part that forms our coating plants – pretreatment tunnel, drying and polymerization oven, painting booth – is designed with the strictly necessary power rating in order to reduce consumption and respect the environment.

Our technical features – modular design and standardization of the components – provide unlimited possibilities of configurations.

Italian experience, worldwide warranty.

Further information on: Euroimpianti Srl

Phone +39.045.795.0777



### Aignep Range

- Automatic Serie
- Serie 1000 Push-on Fitting
- Accessories Serie
- Function Serie
- Quick Couplings Serie
- Values Serie
- Decreaseomatic Pneumatic Manual
- Cylinders Serie
- Infinity Serie
- Air Distribution

**AIGNEP**  
www.aignep.com

In questo numero

Abbiamo parlato di...

ACSYS LASERTECHNIK	VI
AIGNEP	IV
ASSERVIMENTIPRESSE	IV
BALANCE SYSTEMS	XIV
C.HILZINGER-THUM	VI
DOCERAM	VIII
EMW AND SCHAFFER	X
EROWA	IV
EUROIMPIANTI	XV
EUSCHER	VI
GERARDI	IV
HAULICK + ROOS	VI
LISSMAC	XI
LOIRE SAFE	IX
MAGUGLIANI	VI
NOVA IMPIANTI	XIV
OELHELD	VIII

PNEUMAX	XIII
PROSES	IX
RELLASER	X
SCHWARTZ	XII
SIKA	X
SITEMA	XIII
STACK	X
STEINEL	X
UEBELE	XII
VIA	XII
VOITH	XII
WANDRES	XI

Inserzionisti

AIGNEP	XIV
ALUMOTIVE	VII
ASSERVIMENTIPRESSE	VII
AUTECO	V

CAMUT	XIII
CANTINI.FLLI	VIII
EROWA	XV
EUROIMPIANTI	VII
GABELLA	VIII
GERARDI	I
GRANDINI	XI
INFA	XV
KABELSCHLEPP	XIV
LUCAS	IX
LYTO'S	XVI
MAGONI.FLLI	XIV
MAGUGLIANI	XI
MICTU	III
TPA	I
TRUMPF	IX
UCIMU	XIII

### TAPPI CONICI E CILINDRICI CON BATTUTA

NPTF 3/4, BSPT, DIN 910, DIN 908, DIN 906, PTF 7/8

### CILINDRICI CON BATTUTA E GUARNIZIONE

KUR 908, KUR 910, DIN 908

...sotto la testa c'è la guarnizione trapezoidale

**Customer Service**

INFA S.r.l. - 20158 Milano - Carnevali, 105

Telefono 02 33220555  
Fax VERDE 800 827049  
e-mail info@infa.it  
www.infa.it

### L'AMMONITORE

supplemento al n. 8 - Anno 69 - Ottobre 2013

Periodico fondato e diretto per 44 anni da Mino Tenaglia

Direttore responsabile / Editor: Giuseppe Tenaglia

Vice direttore / Assistant editor: Marco Tenaglia

Direttore editoriale / Editor in chief: Fabio Chiavieri

Redazione / Editorial staff: Cristina Gualdoni

Associato USPI Unione Stampa Periodica Italiana

Reg. Tribunale di Varese al n. 2 del 16 giugno 1948  
Stampa: Tipografia Galli - Varese

Ufficio commerciale e abbonamenti / Sales office and subscriptions:  
Valentina Gumirato (valentina.gumirato@ammonitore.it)

Abbonamenti / Subscriptions:  
Per abbonarsi a L'Ammonitore inviare e-mail a:  
abbonamenti@ammonitore.it

Mar.Te Edizioni pubblica anche la rivista INNOVARE

Mar.Te Edizioni Srl - Via Magenta 9 - 21100 VARESE  
tel (+39) 0332 283009 - fax (+39) 0332 234666  
www.ammonitore.com - info@martedizioni.eu  
P.I. 03258260128

## Una Combinazione Vincente!

### Grazie Mille!

Per il Vostro interesse, per la qualità delle Vostre richieste e per la Vostra apprezzata visita presso il nostro stand alla EMO 2013.

[www.erowa.com](http://www.erowa.com)

more than you expect  
EROWA

# LYTO'S

racking solutions



Structures for automated warehouse



## NEWS

31/08/2013

**One more success of LYTO'S-AUTOMHA in India**  
Beating international competition, AUTOMHA with LYTO'S have been awarded of a new major contract in India for a self supporting automatic warehouse with 25 m height....

31/07/2013

**Comes into operation the new automatic warehouse of GROWERMETAL**

Successfully completed the test, it started loading of the new automatic warehouse realized by LYTO'S and LCS, for the Company based in Calco (LC)....

20/06/2013

**New flag on the LYTO'S globe: Kingdom of Saudi Arabia**  
Continuing commercial success of LYTO'S that follows SYSTEM LOGISTICS in an important new realization on the international beverage market....

29/05/2013

**PASTA ZARA confirm LYTO'S as supplier for his new warehouse of 65,000 pallets**

When a Customer confirms the choice of the Supplier for a new plant, meaning he is a satisfied Customer...



Come to read all news in our web site.

## LYTO'S the ideal partner for the realization of your automated warehouse

- 50 years of **experience** and **strong specialization** in the field of automated warehouse
- Large range of **customized solutions**, able to satisfy all Customer needs
- **Dynamic and experienced** Company **organization** in the management of complex projects
- High level of **internationalization** with projects designed and realized all around the world
- **Complete competence** and **knowledge**, from the foundation design to the architectural cladding
- Company **reliability** and **quality** of the realizations at the highest level of the market

LYTO'S Spa Italy - Casalserugo (PD) - Via Cà Ferri 45  
Tel +39 049 8742511 - Fax +39 049 8742599  
E-mail: lytos@lytos.com

[www.lytos.com](http://www.lytos.com)